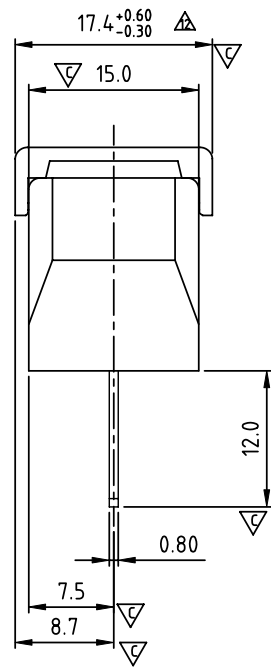
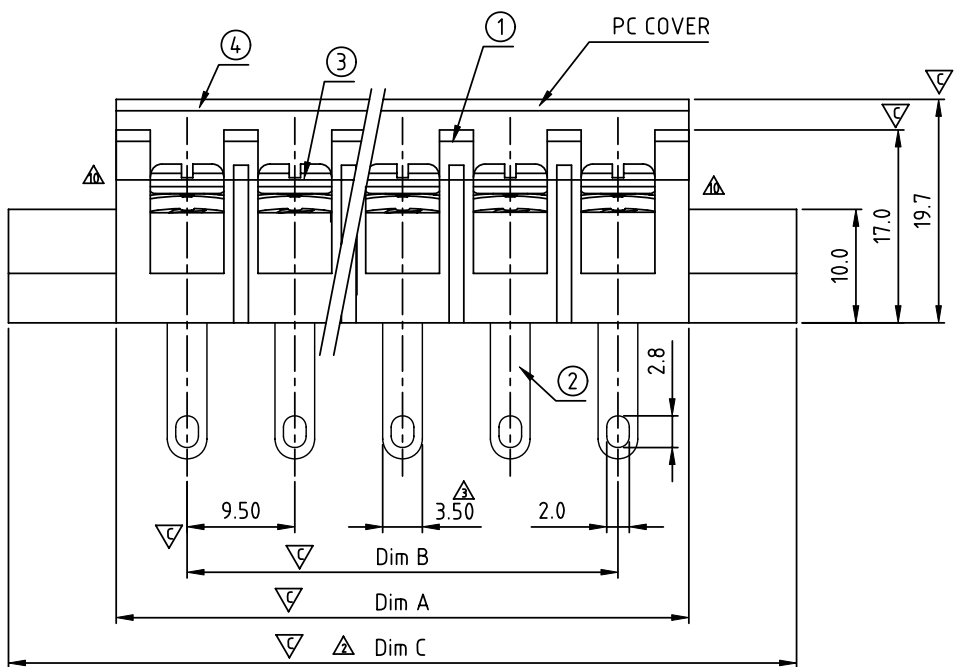


△ N=Number of contacts
Dimension A&B

DIM A	$N \times 9.5 + 3.0$
DIM B	$(N-1) \times 9.5$
DIM C	$(N+2) \times 9.5 + 3.0$

Poles	Tolerance
4P	± 0.20
5P-10P	± 0.30
11P-24P	± 0.40
25P-32P	± 0.60



SIGN	DATE	DESCRIPTION	APPROVER
△	2/04'06	Part No. changed	Tony
△	3/07'06	Dimension changed from $[(N+2) \times 9.5] \pm 0.80$ to $[(N+2) \times 9.5 + 3.0] \pm 0.80$	Tony
△	7/11'06	Dimension changed from 3.6 to 3.5	Tony
△	2006.08.3	Screw torque value changed from 10.4Lb-in to 12Lb-in	梁仁松
△	2006.08.3	Wire range changed from 22-14Awg to 22-12Awg	梁仁松
△	2006.08.3	Approval changed	梁仁松
△	2011.04.28	The construction is changed here.	Tason
△	10/28'12	Change the dimensional tolerance	Jacky
△	10/28'12	Change the screw plating specification	Jacky
△	06/05'14	change the structure	Guoxue
△	06/05'14	Change the dimensional tolerance	Guoxue
△	08/26'14	The dimensional tolerance is change from 17.4 ± 0.30 to $17.4^{+0.60}_{-0.30}$	Airy min

THIS IS CAD DRAWING, DO NOT REVISE MANUALLY!!!

MATERIALS ELECTRICAL
 RATED VOLTAGE & CURRENT: 300 V, 20 A
 WITHSTAND VOLTAGE: AC 2000 V/Min
 INSULATION RESISTANCE: 1000 MΩ OR MORE AT DC 500 V
 OPERATING TEMPERATURE RANG: -40 °C ~ +115 °C

- △ SCREW TORQUE VALUE: 12 Lb-In.
- △ WIRE RANGE: 22 - 12AWG
- 1) MOLDED PARTS: POLYIMIDE 66, UL 94 V-0 BLACK
- 2) TERMINAL: BRASS, 0.8t, Tin PLATED
- 3) TERMINAL SCREWS: STEEL, M3.5
- 4) COVER MATERIAL: PC

△ APPROVAL: us
 Critical dimension: ▽

- △ PART No.: YK505 xx 1 x x 00G
- NO. OF POLES: 04: 4 POLES, 05: 5 POLES, 06: 6 POLES, ..., 30: 30 POLES
- MARK: 0: "@" MARK, 1: "ANY" MARK
- TERMINAL & SCREW PLATED: 0: TERMINAL & SCREW: G/F, △ 1: TERMINAL: G/F, SCREW: Ninc, 2: TERMINAL: Sn, SCREW: G/F, △ 3: TERMINAL: Sn, SCREW: Zinc

ANYTEK

CUSTOMER COPY

ALL RIGHTS RESERVED. REPRODUCTION OR ISSUE TO THIRD PARTIES IN ANY FORM WHATSOEVER IS NOT PERMITTED WITHOUT WRITTEN AUTHORITY FROM THE PROPRIETOR. PROPERTY OF ANYTEK TECHNOLOGY CO., LTD

TITLE		YK-505 W/Flange&With Cover Series (4P-30P)				
PART NO.		YK505xx1xx00G		DWG NO.		8YK0002-505
APPROVED	CHECKED	DESIGNED	DRAWN	CUST NO.		Tolerance
		Airy min 2014.08.26	Airy min 2014.08.26			X. ±0.50
				UNIT: mm		X.X ±0.30
				SCALE: NONE		X.XX ±0.10
				SHEET: 01/01		X° ±1°
				REV: I		